



## Campus & Co

### REQUIREMENT:

Ramped access to create an accessible pathway for all users, ensuring compliance with accessibility standards and enhancing the overall shopping experience.

The system will be used daily and must support various weight loads, including shopping trolleys, wheelchairs, pushchairs, and pedestrians.

The customer chose to avoid a wooden or concrete ramp due to their one-time use design. In contrast, our modular ramps can be reconfigured to accommodate future changes to the shop layout or entrance design, offering long-term cost savings.

### CAD DRAWINGS:

Our in-house design team produced 3D and 2D CAD drawings, which were supplied to the client along with their quotation.

#### APPLICATION

Public Buildings

#### LOCATION

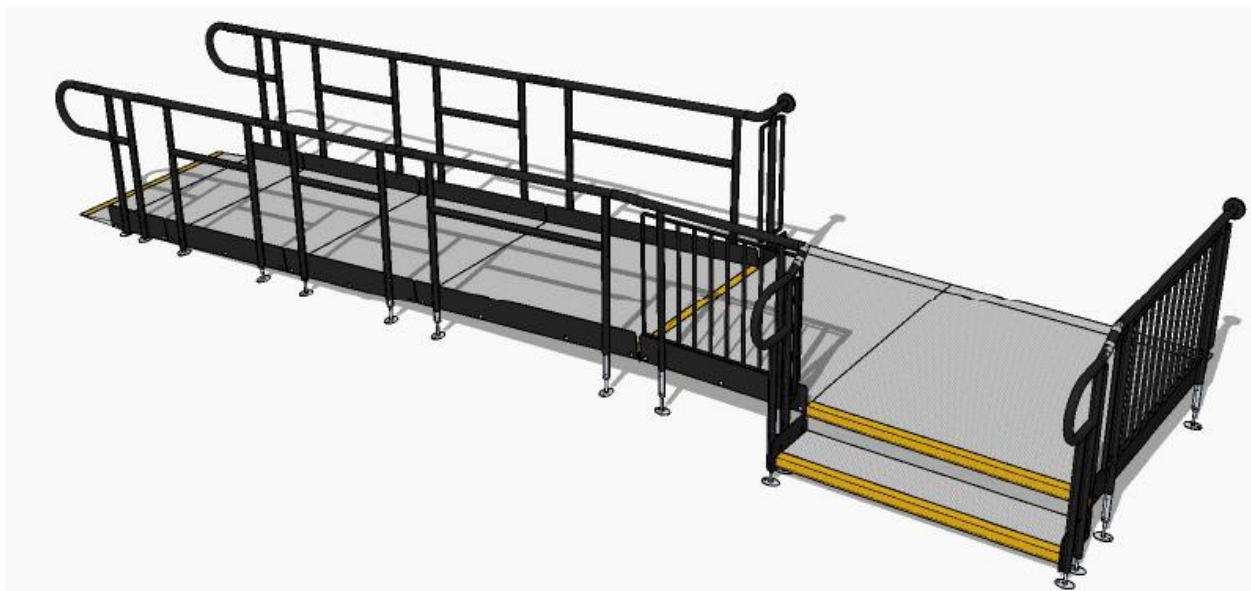
Hastings, East Sussex

#### SYSTEM

Standard Modular Ramp & Standard Step System

#### SERVICE PACKAGE

Supply & Install



## END RESULT:

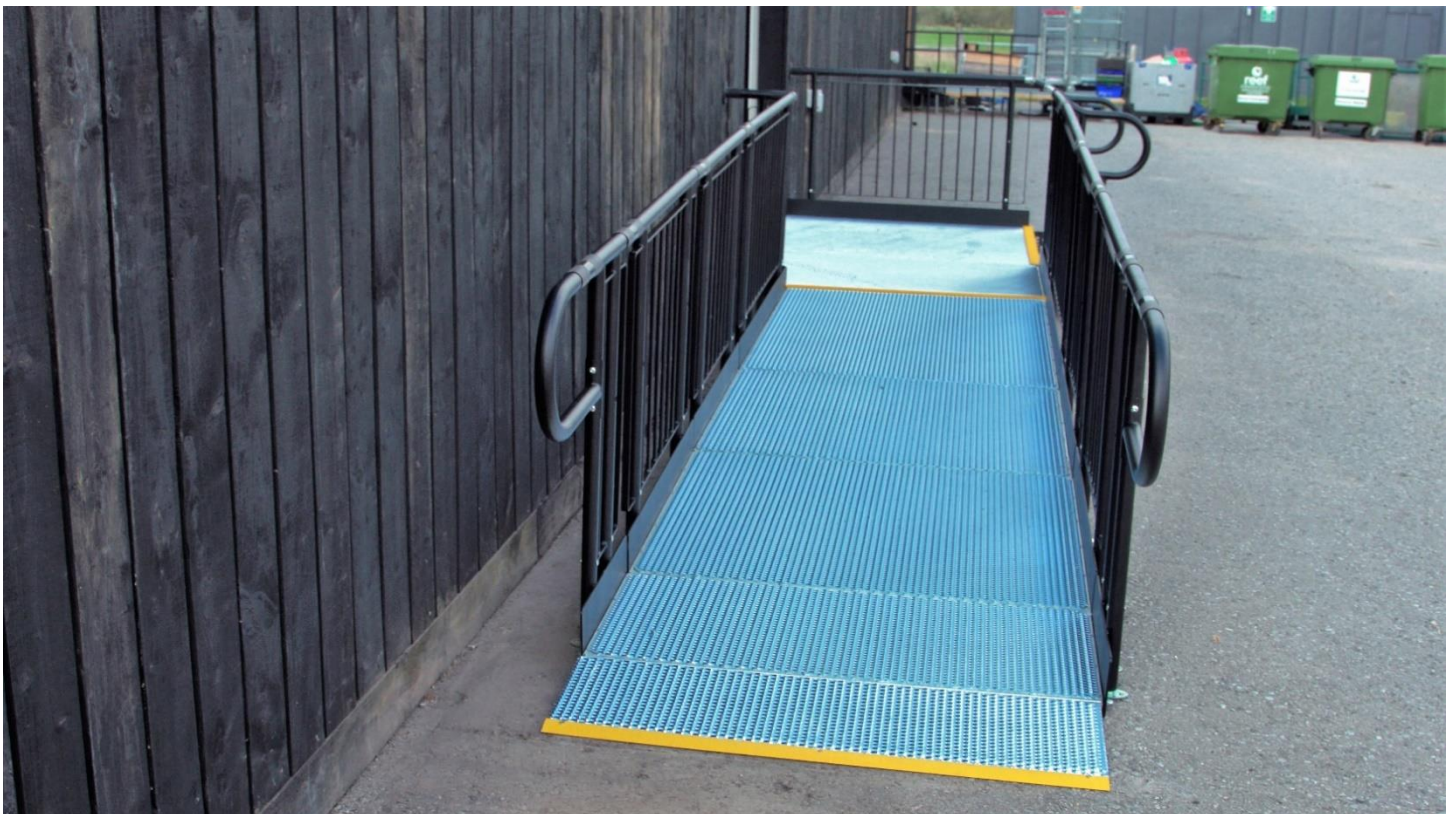
The ramp was installed within a few hours on a bank holiday when the shop was closed to the public, ensuring that the installation did not disrupt the shop's day-to-day operations.

### FEATURES INCLUDED:

- Trombone Ends - Prevent clothes from snagging at both ends.
- Mesh Platform - A multi-directional, slip-resistant walkway made from self-draining steel mesh with a galvanised finish.
- Continuous Handrail - Provides consistent support along the ramp.
- Standard Colour: Black - Features a durable powder-coated black finish.
- Adjustable Telescopic Legs - Adaptable to various threshold heights.

### EXTRA FEATURES INCLUDED:

- Infill Handrail - Prevents users from climbing or falling through gaps.
- 1100mm High Rail - Provides added safety by attaching to level sections. Yellow Tread - Enhances visibility for those with impaired vision by highlighting the ramp's edge and any level changes
- Standard Step Unit - The ideal addition to any ramp installation, providing the access needed for able-bodied users. They can also be stand-alone units, independent of the Rapid Ramp System.





CAMPUS & CO.  
Hastings



TEL: 01424 714646  
EMAIL: [sales@rapidramp.co.uk](mailto:sales@rapidramp.co.uk)

HOURS: Open 8am - 5pm, Monday to Friday  
ADDRESS: Riverside Works, Church Ln, Etchingam, TN19 7AS

Do you require modular  
ramps and steps?

Contact our sales team