

CASE STUDY: Hathersage Car Park, Manchester

AN INTERNAL RAMP INSTALLED OVER CONCRETE

BACKGROUND: Patients, staff, and visitors for the Oxford Road site of Manchester Royal Infirmary use the linking Hathersage Road Car Park daily.

REQUIREMENT: Ramped access from the car park level to the hospital's disabled lift.

SITE SURVEY: This project benefitted from the Lidar scanning technology used by our site surveyors.

The machine scanned and plotted the heights and widths of the objects in view, including the concrete flooring, ceiling, pillars, and overhead ring beams.

This information was invaluable for the CAD designer who needed to achieve a minimum of 2m headroom between the beams and the upper ramp section.

With this consideration in mind, our designer created a 3D visual of the ramp on top of the lidar model with labels for context.

WHY DO WE USE LIDAR SCANNING TECHNOLOGY?

The lidar modelling process helps contextualise the drawings by placing the system in a virtual representation of the real environment, in this example, an internal concrete setting with a set ceiling height.

We aim to carry out site surveys efficiently and within a minimal time frame. This technology enables us to continue to achieve these objectives and more.

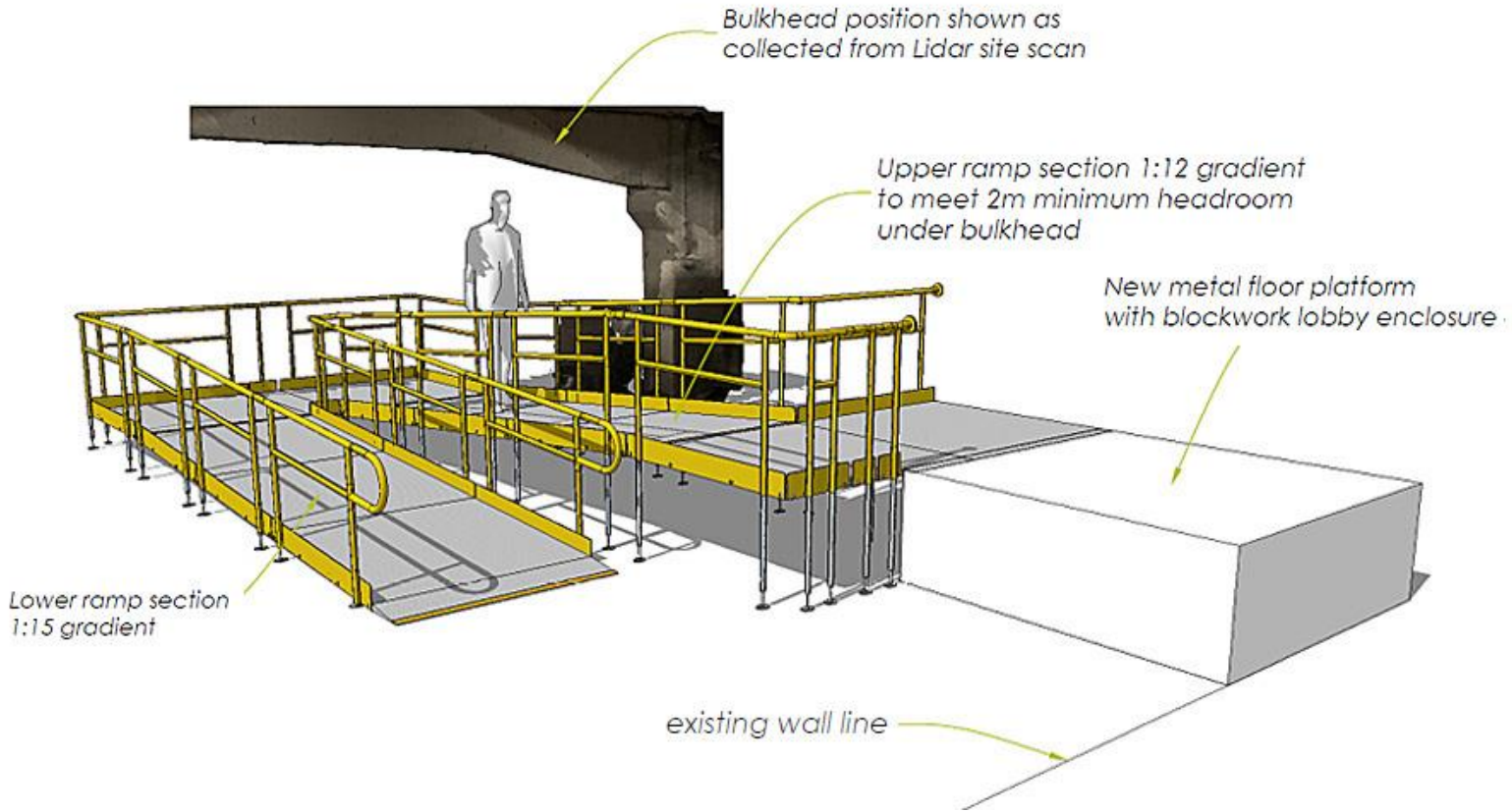
Application: Public Building

Location: Manchester Royal Infirmary, Manchester

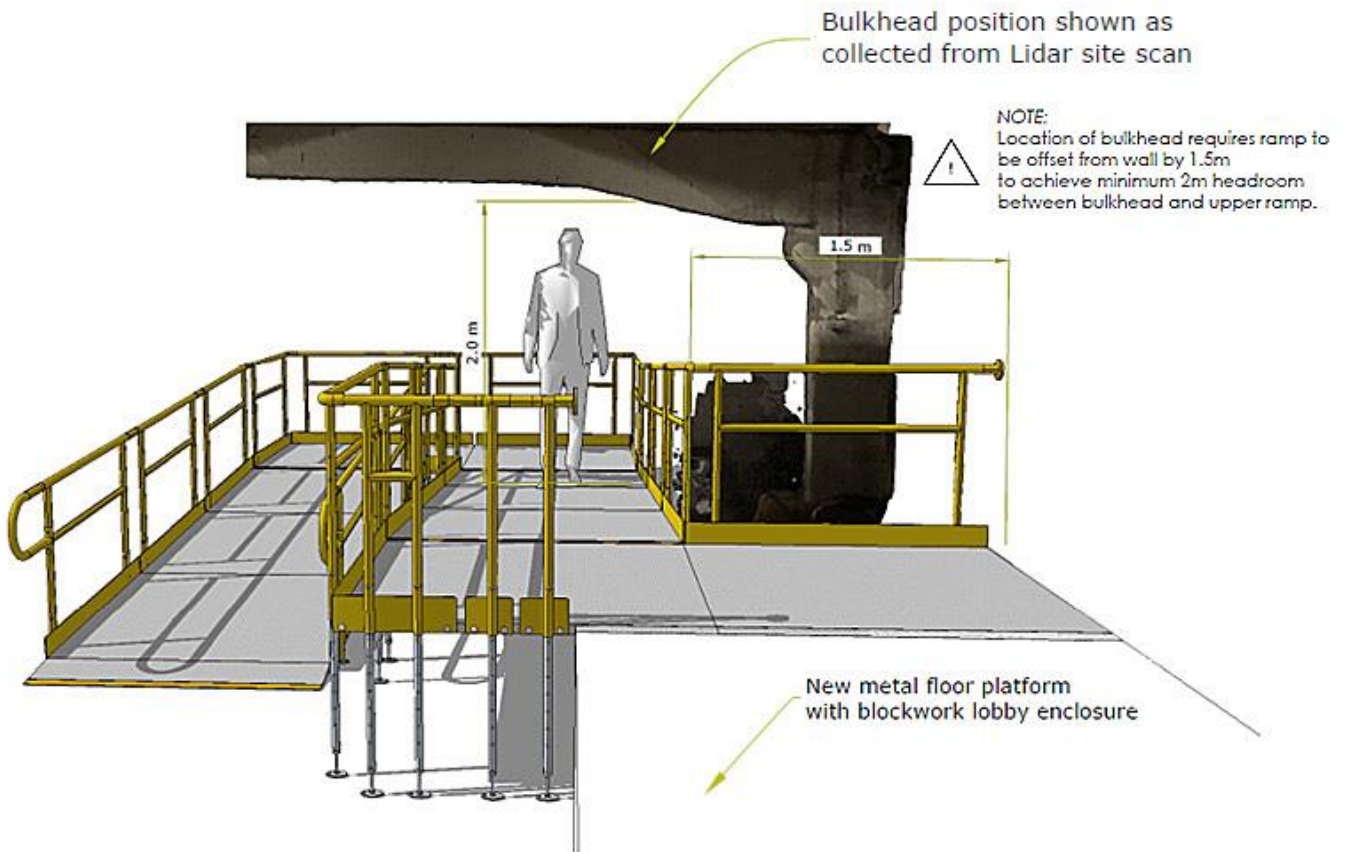
System: Standard Ramp System

Service Package: Supply & Install

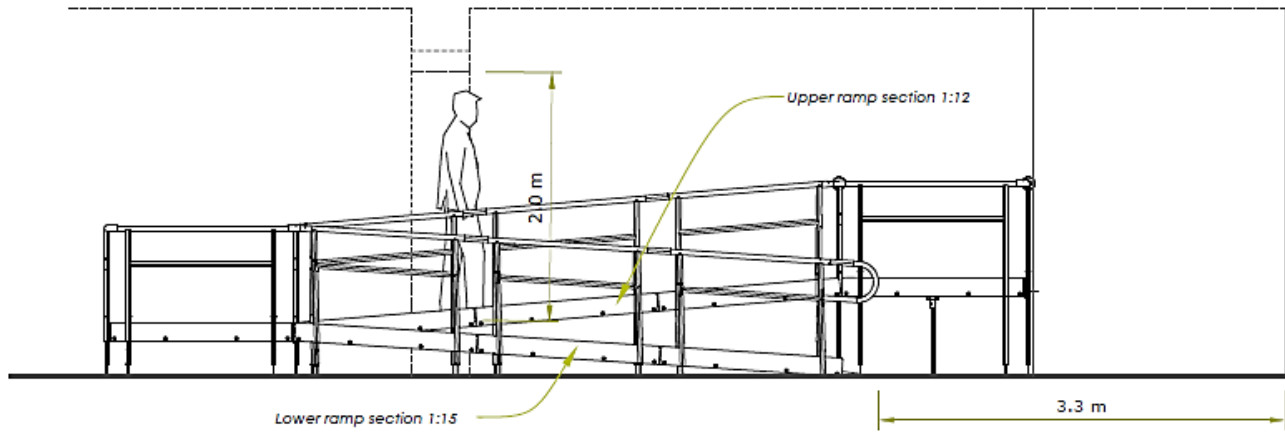
Perspective 1



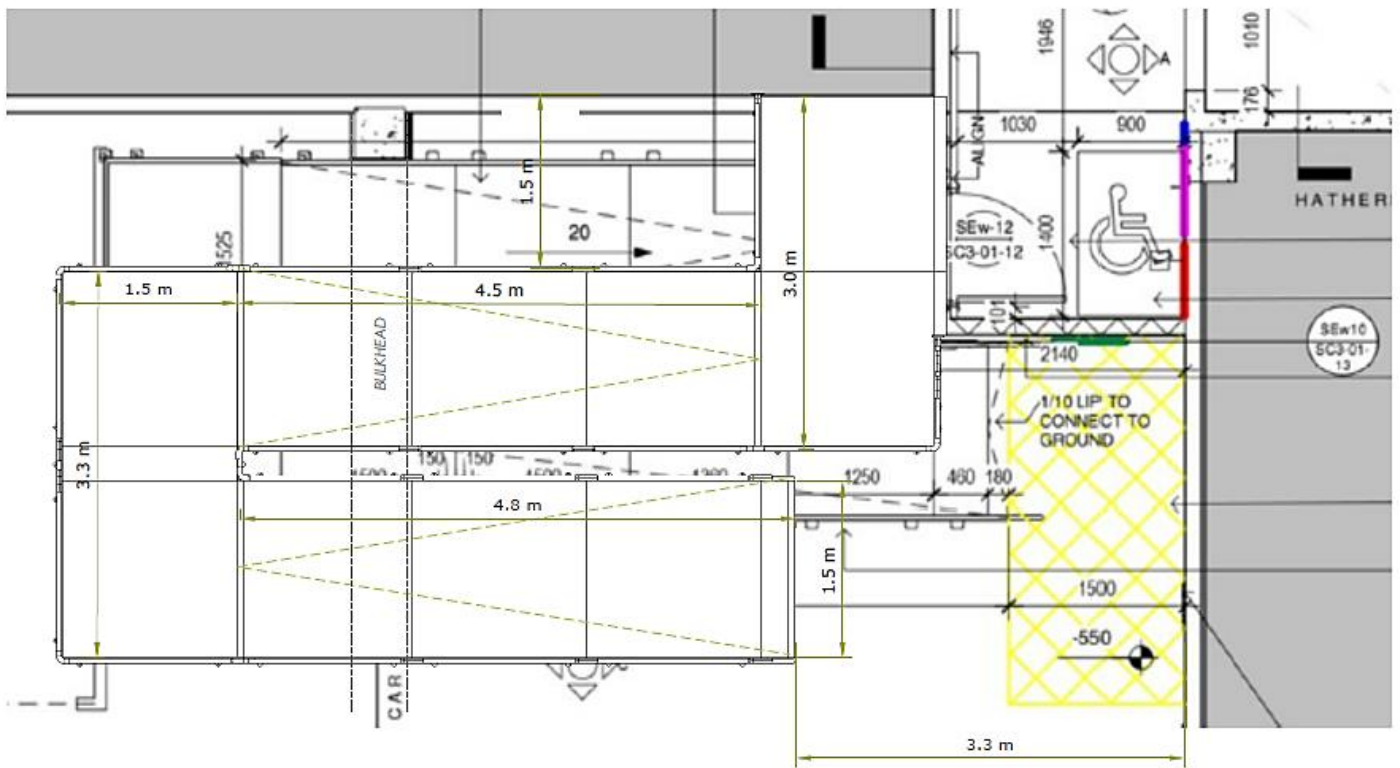
Perspective 2



ELEVATION



PLAN



END RESULT: The internal ramp was installed in two days.

The lower section has a 1:15 gradient, and the upper section has a 1:12 gradient to ensure that a 2m headroom minimum could be met under the beams.

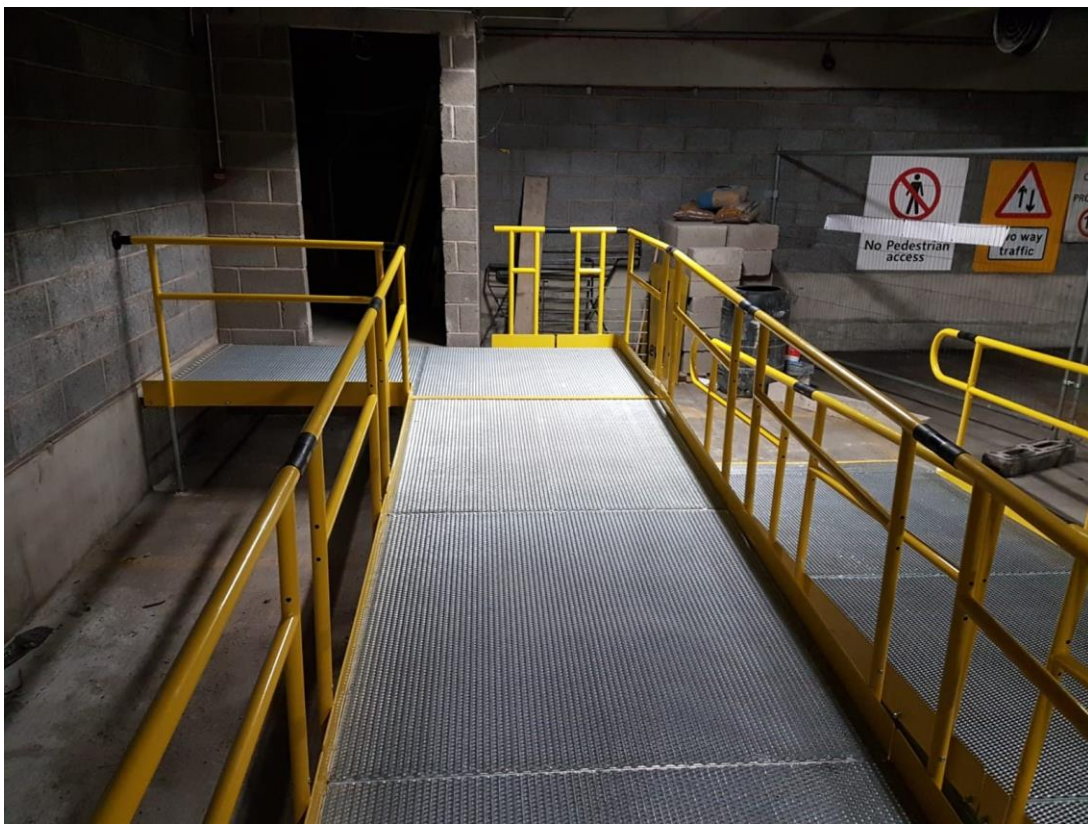
The ramp joins a new metal floor platform leading to a lorry and disabled lift.

The ramp feet were bolted into the ground to keep the system securely in place.

FEATURES INCLUDED:

- Trombone Ends - these are added to the ends of a Rapid Ramp to prevent clothes catching.
- Mesh Platform - the self-draining mesh allows water to pass through rather than collect on the surface.
- Standard colour: Yellow – one of the easiest colours to see because of its ability to reflect light. The handrails are powder coated to create a durable finish that is tougher than conventional paint.
- Yellow Tread - this is a safety feature designed to help those with impaired vision identify the nose of the ramp and level changes.
- Standard Handrail - this handrail system ensures users always have support to hold onto.





Thanks for sending the completed photos, the ramp looks really good!

Associate Architect



TEL: **01424 714646**
EMAIL: **SALES@RAPIDRAMP.CO.UK**

Hours:
Open 8am - 5pm, Monday to Friday

Address:
10 Menzies Road, Ponswood Industrial Estate, St Leonards on Sea, East Sussex TN38 9BB

Do you require modular ramps and steps?

Contact our sales team