

## CASE STUDY: **Diageo Global, Whisky Factory**

**REQUIREMENT:** The client was in the process of constructing a new reception entrance, with a ramp being an essential component to ensure compliance with the Disability Discrimination Act (DDA) requirements.

Beneath the intended ramp are drainage systems, meaning convenient access to them was necessary.

**CAD DRAWINGS:** In-house CAD drawings were generated using photographs and measurements supplied by our on-site surveyor.

During the site survey, a Lidar scanner was used to scan and digitally map the entire area, encompassing the building, various floor levels, and any obstacles. This technology allows us to conduct site surveys swiftly, even under tight time constraints. Once the data was collected, our in-house drawing team was able to generate a 3D representation of the ramp on top of an accurate depiction of the real location.

**Application:** Public Building

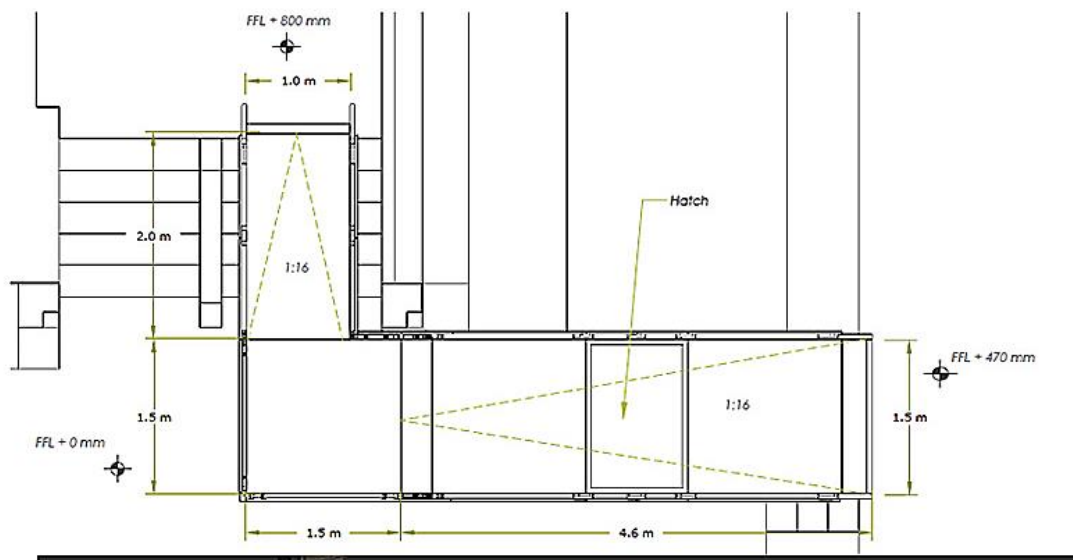
**Location:** Glasgow, River Clyde

**System:** Fully Compliant Ramp

**Service Package:** Supply & Installation



## Ramp



**END RESULT:** Our in-house team managed the complete process of designing, fabricating, and installing the ramp system. This product addresses the elevation changes to the main entrance, while ensuring full compliance with Building Regulations Part M and K.

Additionally, it features a robust aluminium composite hoarding enclosing the underside. The solid hoarding cover is designed to be easily unscrewed, providing convenient access for the client to inspect the drains as needed.

### FEATURES INCLUDED:

- Infill Handrail - This component is designed to prevent users from climbing or falling through gaps.
- Yellow Tread - This safety feature aids individuals with impaired vision in identifying the ramp's edge and any changes in level.
- Trombone Ends - These additions are placed at the ends of a Rapid Ramp to prevent clothes from getting caught.
- Mesh Platform - The self-draining mesh allows water to pass through, preventing water accumulation on the surface.
- Continuous Handrail - This handrail system ensures that users always have a support to hold onto.
- Standard colour: Black - The ramps come in a powder-coated black finish, ensuring durability that surpasses conventional paint.

### EXTRA FEATURE INCLUDED:

- Solid Hoarding - This mesh is purposefully designed to deter unauthorised access to the underside of the ramp, making it a frequent choice for schools and other public buildings.





TEL: **01424 714646**  
EMAIL: **SALES@RAPIDRAMP.CO.UK**

Hours:  
Open 8am - 5pm, Monday to Friday  
Address:  
10 Menzies Road, Ponswood Industrial Estate, St Leonards on Sea, East Sussex TN38 9BB

Do you require modular ramps and steps?

Contact our sales team