



Maidenhead Library

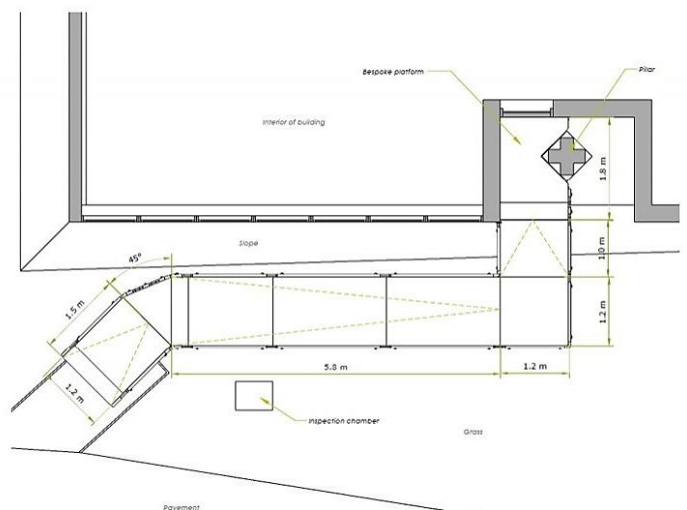
REQUIREMENT:

The client required a replacement for the deteriorating wooden ramp at the library's fire exit, as it could pose a significant slip-and-trip hazard to the public in an emergency.

Our steel modular ramp was chosen as a safer, more reliable solution, offering superior fire-resistant properties compared to another wooden ramp, which is both combustible and prone to burning when exposed to fire.

DESIGN PHASE:

Our in-house design team developed a 3D model and 2D plan of the system, providing the client with a virtual preview of the solution in situ.



APPLICATION

Public Building

LOCATION

Maidenhead, Berkshire

SYSTEM

Standard Modular Ramp

SERVICE PACKAGE

Supply & Installation

END RESULT:

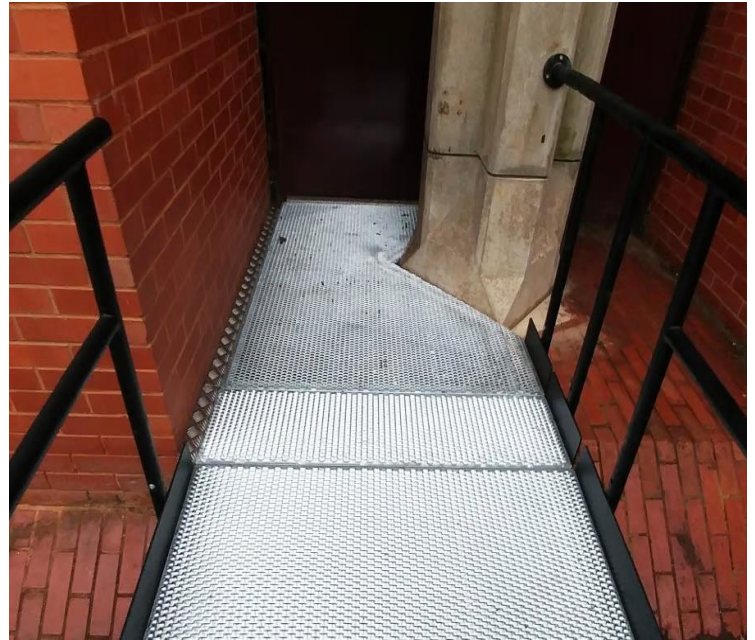
We installed the Rapid Ramp with exceptional speed, completing the project in just a few hours.

The installation featured a custom platform that was fitted around an existing pillar and seamlessly mimicked the layout of the current path.

In contrast, a concrete ramp would have required several days to cure, while a wooden ramp could have taken up to a week to construct.

FEATURES INCLUDED:

- Slip-resistant Mesh Platform - A multi-directional walkway with self-draining steel mesh and a galvanised finish.
- Looped Trombone Ends – Prevents clothes from snagging at the ends.
- Standard Colour: Black - Powder-coated black finish for greater durability than traditional paint.
- Adjustable Telescopic Legs - Adaptable to various threshold heights.
- Standard Handrail - This handrail system ensures that users always have a support to hold onto.



Do you require modular
ramps and steps?

Request a quick quote

TEL: 01424 714646
EMAIL: sales@rapidramp.co.uk

HOURS: Open 8am - 5pm, Monday to Friday
ADDRESS: 10 Menzies Road, Ponswood Industrial Estate, St Leonards on Sea, East Sussex TN38 9BB