



**Application:** Public Building / Heritage

**Location:** London

**System:** Fully Compliant Modular Ramps

**Service Package:** Ramp Rental

## CASE STUDY: Westminster Hall, Westminster

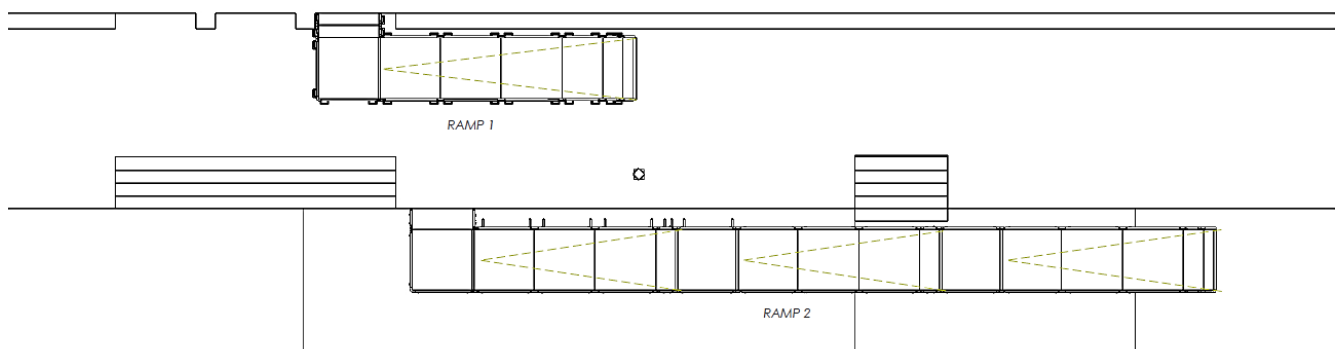
**BACKGROUND:** The Lying-in-State of Her late Majesty Queen Elizabeth II took place in Westminster Hall at the Palace of Westminster.

An accessible queuing scheme was available for those with a disability or long-term condition, unable to queue for an extended period.

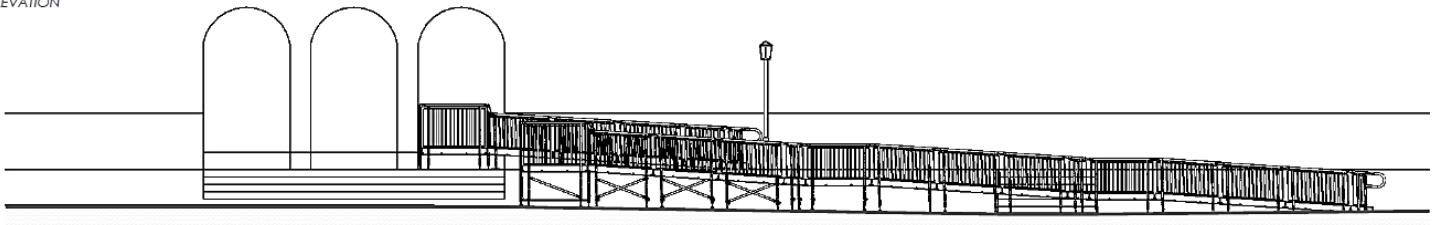
**REQUIREMENT:** Rental ramps throughout the duration of The Lying-in-State, to create an accessible route.

**ADDITIONAL INFORMATION:** 3D and 2D drawings were designed in-house and provided to the client with their rental quotation.

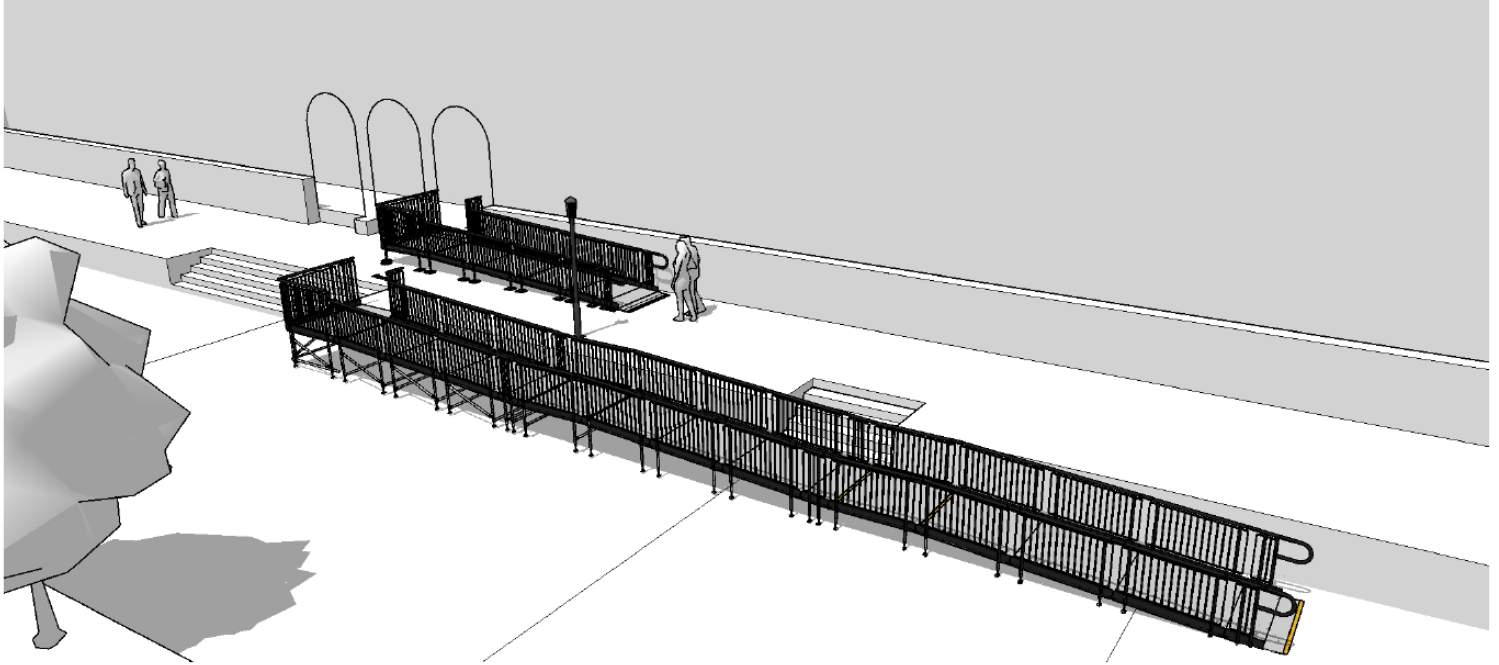
PLAN



ELEVATION

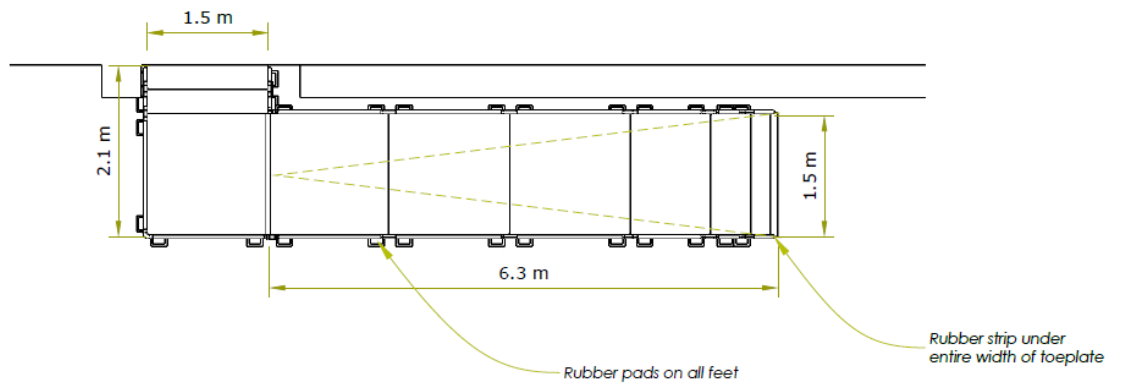


PERSPECTIVE

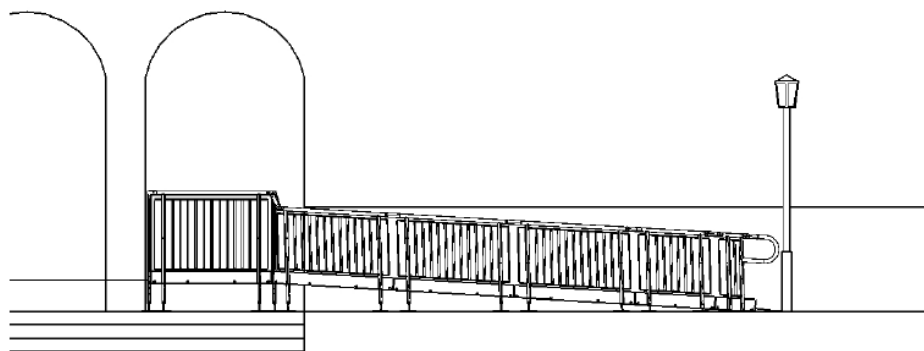


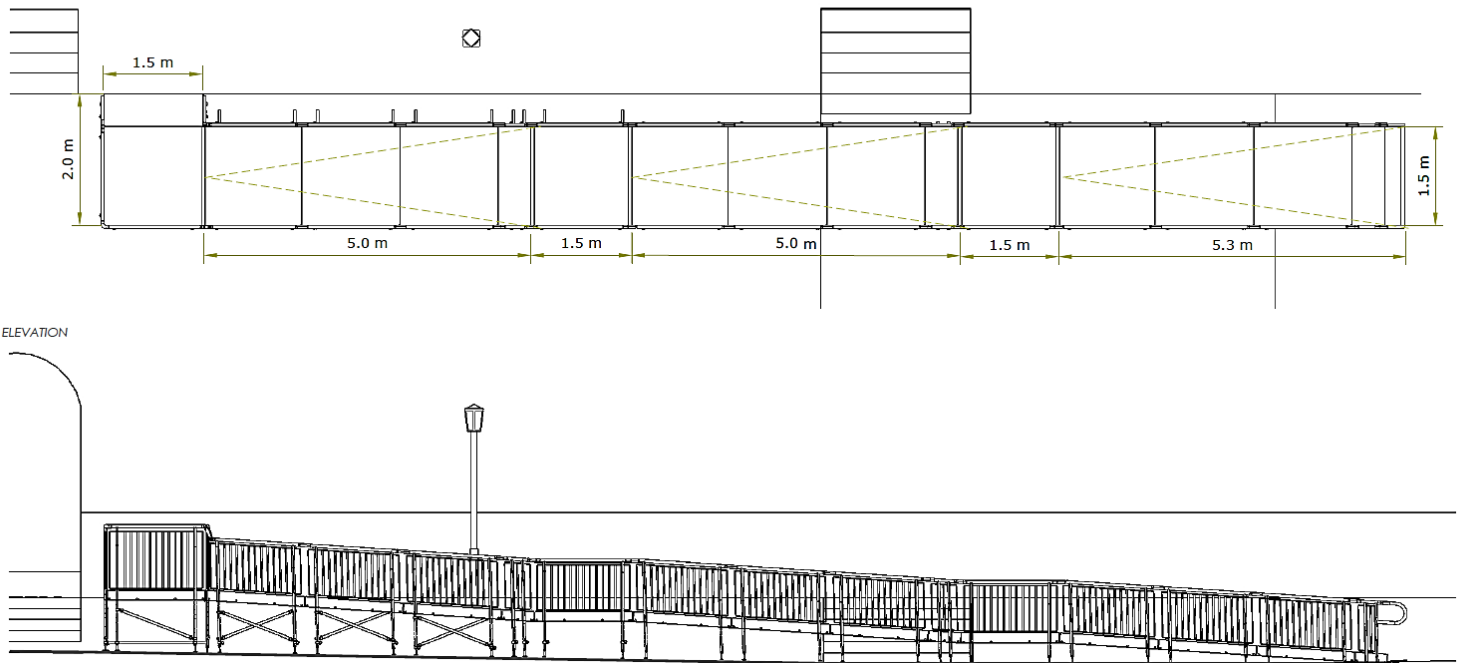
RAMP 1

PLAN



ELEVATION





**END RESULT:** Once actioned, the whole project was completed within a three-day turnaround time, with an urgent site survey achieved.

The ramps fully complied with Document M & K of the Building Regulations and include a 1:15 gradient, the minimum standard to achieve a compliant ramped gradient.

The product has an entirely modular design that makes it easy to redesign and relocate to suit last-minute site changes. In this instance, Ramp 1 had to be altered from its original design. There was also a last-minute request to accommodate a marquee, which meant moving Ramp 2 over 1500mm.

The greatest care is taken with historic ramp installations, as shown in this example. To prevent any damage from being caused to historic flooring, slip-resistant rubber pads were added underneath each support foot and under the entire width of the toeplate.

Wall fixings were unnecessary, so no impact was caused to the walls. Also, cross bracing was carried out using longer-length tubes to ensure rigidity under all platform legs.

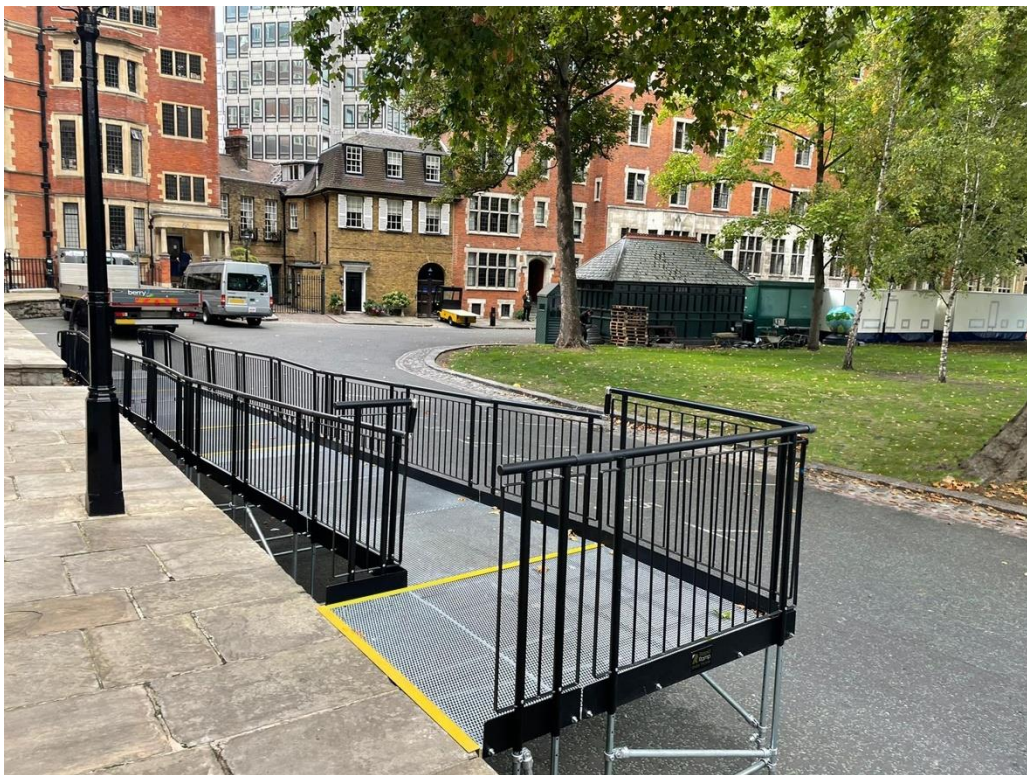
We were willing to consult with the appropriate conservation and planning authorities throughout the project.

Once the rental duration was completed, the ramps were removed and joined our hire routines of stock.

#### FEATURES INCLUDED:

- Infill Handrail - this product prevents users from climbing or falling through gaps.
- Yellow Tread - this is a safety feature designed to help those with impaired vision identify the nose of the ramp and distinguish any level changes.
- Trombone Ends - these are added to the ends of a Rapid Ramp to prevent clothes catching.
- Mesh Platform - the self-draining mesh allows water to pass through rather than collect on the surface.
- Rest Platform – a rest platform at 5 metres is required to allow the user to pause.
- 1100mm High Rail – these handrails attach to any level sections.
- Continuous Handrail - this handrail system ensures users always have support to hold onto.





THE EXPERTS IN MODULAR RAMPS

TEL: **01424 714646**  
EMAIL: **SALES@RAPIDRAMP.CO.UK**

Hours:  
Open 8am - 5pm, Monday to Friday

Address:  
10 Menzies Road, Ponswood Industrial Estate, St Leonards on Sea, East Sussex TN38 9BB

Do you require wheelchair ramps and steps?

Contact our sales team