

St Paul's Cathedral

BACKGROUND

DDA improvement works were scheduled to begin, which included a permanent masonry ramp from the north entrance.

REQUIREMENT:

Dismantle the temporary north ramp and repurpose the components in a new configuration from the south entrance, all without causing damage to the cathedral or inconveniencing visitors.

Much like a Meccano kit, our modular ramp system is constructed from interchangeable components that could be easily reused and reconfigured.

This innovative approach offered substantial cost savings for the customer, as the same components were used twice. Additionally, by being reused, the product's environmental impact would have been reduced, compared to single-use timber or concrete, which often ended up in landfills.

CAD DRAWINGS:

Our in-house design team created 3D and 2D CAD drawings of the ramp, providing the customer with virtual previews of the solution in situ.

Consultations with the relevant conservation and planning authorities were carried out during the design phase, with discussions focusing on how the ramp would be supported around the existing paving features.

APPLICATION

Heritage

LOCATION

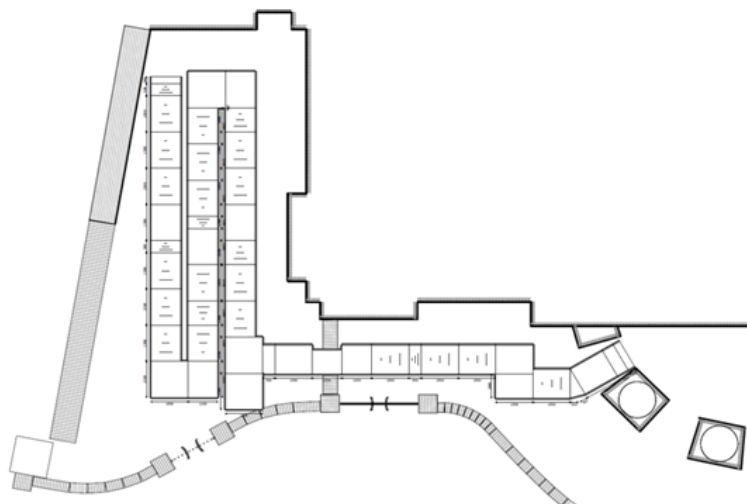
London

SYSTEM

Fully Compliant Modular Ramp

SERVICE PACKAGE

Ramp Rental



END RESULT:

The installation was completed within a week—an impressively quick timeline for a ramp of this size, helping to minimise long-term disruption.

To ensure stability, the ramp feet were secured with cross-braces rather than being bolted down. This precaution was taken to prevent any potential damage to the historic cobbled ground.

FEATURES INCLUDED:

- Looped Trombone Ends – Prevents clothes from snagging at the ends.
- Slip-resistant Mesh Platform - A multi-directional walkway with self-draining steel mesh and a galvanised finish.
- Anti-climbing Infill Handrail - Prevents users from climbing or falling through gaps.
- Continuous Handrail - Provides unbroken support for users to hold onto.
- Standard Colour: Black - Powder-coated black finish for greater durability than traditional paint.
- Adjustable Telescopic Legs - Adaptable to various threshold heights.
- Non-slip Yellow Stair Nosings - Enhances visibility of system edges and level changes for users with impaired vision.
- Rest Platform - Positioned every 5 meters for user breaks.
- 1100mm High Rail - Attaches to level sections for added safety.

EXTRA FEATURE INCLUDED:

- Standard Underside Mesh - Specifically designed to prevent users from gaining access underneath the ramp, commonly specified for public buildings such as schools.

