

CASE STUDY: **University of Liverpool**

REQUIREMENT: Modifications were underway at the university with one of the improvements including fitting a ramp access system from the rear fire exit door.

The decision to opt for a modular ramp was based on its ease of removal, unlike concrete, which involves a time-consuming process of breaking solid blocks into pieces.

Furthermore, our galvanised steel ramp is fire resistant, unlike wooden ramps that can burn when exposed to fire.

CAD DRAWINGS: In-house CAD drawings were generated using photographs and measurements supplied by our on-site surveyor, and architectural drawings provided by the client.

During the site survey, a Lidar scanner was used to scan and digitally map the entire area, encompassing the building, various floor levels, and any obstacles. This technology allows us to conduct site surveys swiftly, even under tight time constraints.

Once the data was collected, our in-house drawing team was able to generate a 3D representation of the ramp on top of an accurate depiction of the real location.

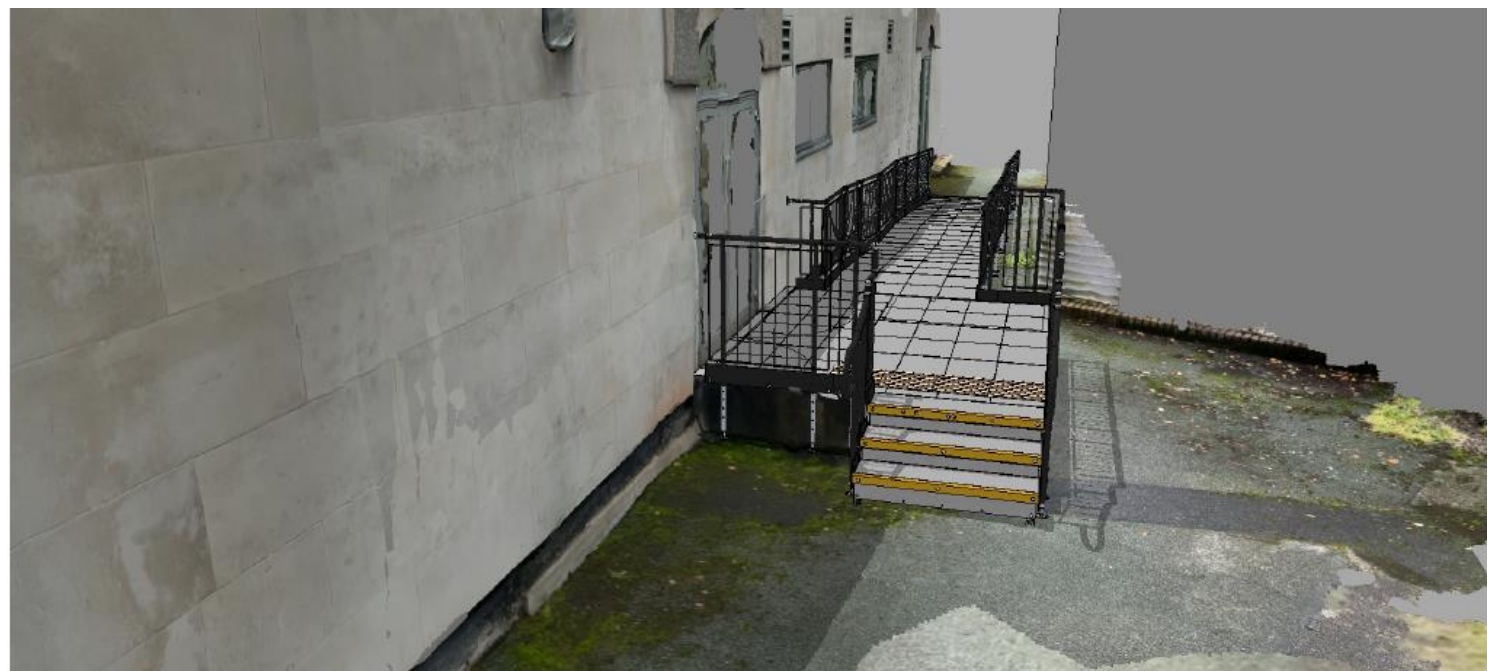
Application: Education

Location: Liverpool, Merseyside

System: Fully Compliant Modular Ramp

Service Package: Supply & Installation





END RESULT: A fully compliant Rapid Ramp was installed within a single day. It runs parallel to the structure and makes efficient use of the available space between the two buildings.

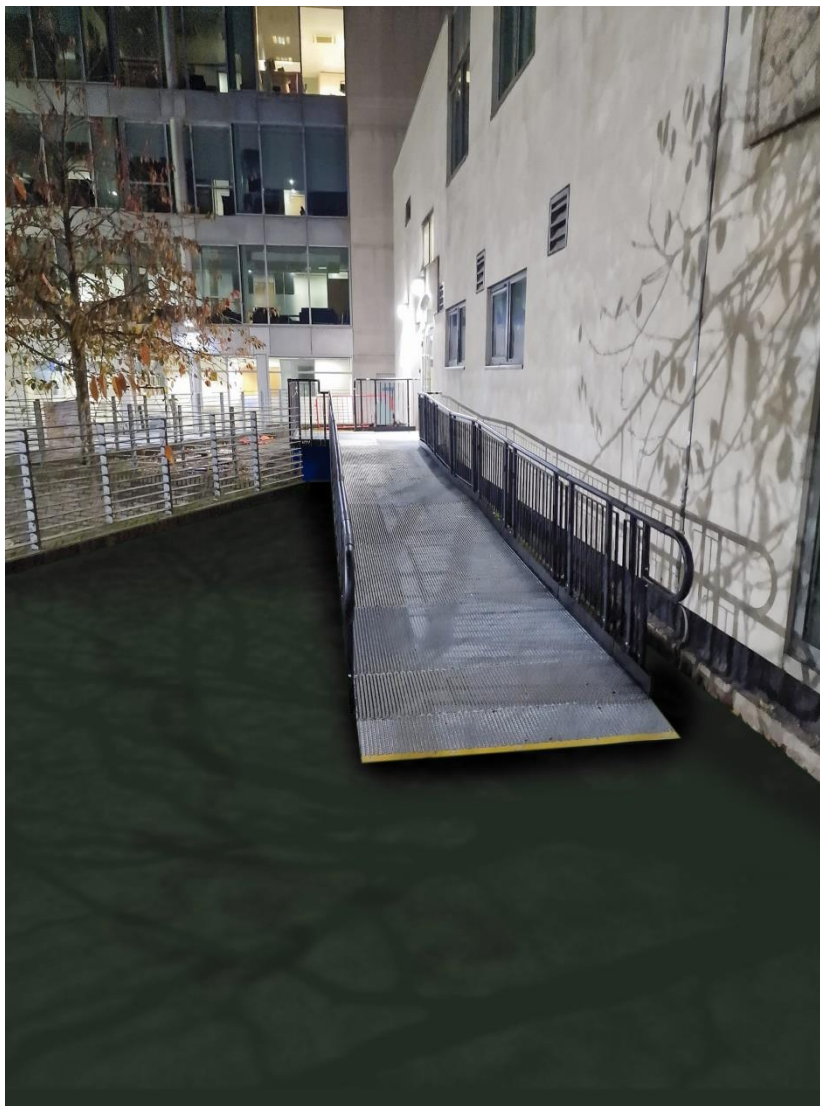
Preceding the step approach, a corduroy surface was installed to offer a tactile warning for visually impaired individuals.

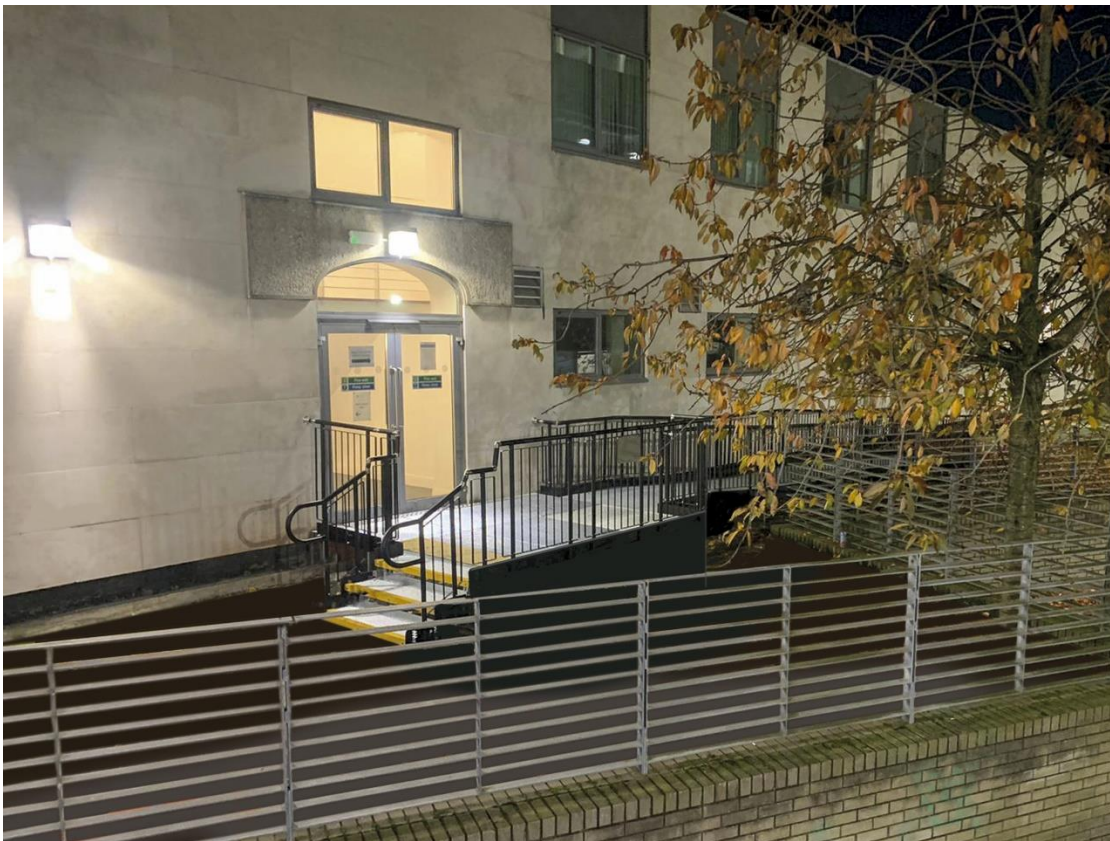
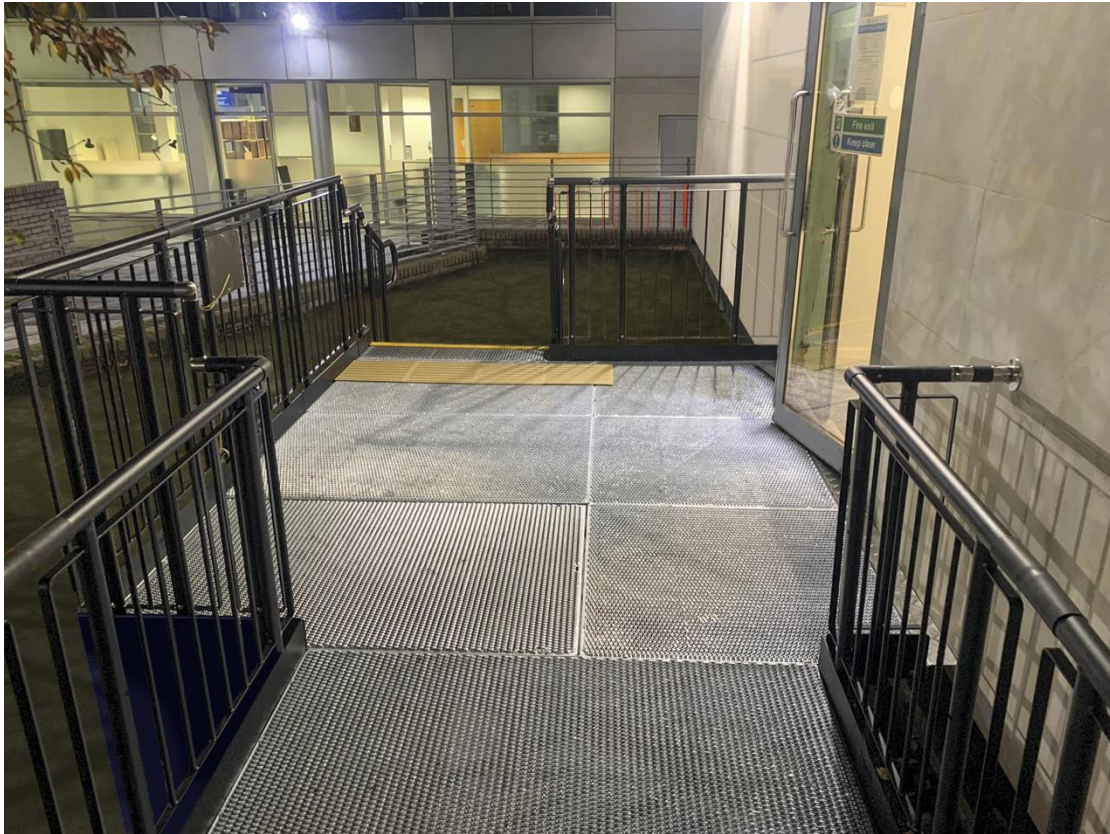
FEATURES INCLUDED:

- Infill Handrail - This product safeguards against users climbing or falling through gaps.
- Yellow Tread - A safety feature designed to help those with impaired vision identify the system's nose and any level changes.
- Trombone Ends - Installed at the ends of a Rapid Ramp to prevent clothes from snagging.
- Mesh Platform - Self-draining mesh allows water to pass through, preventing surface accumulation.
- Continuous Handrail - This handrail system ensures that users always have a support to hold onto.
- Standard colour: Black - Our ramps boast a powder-coated black finish, ensuring durability beyond typical paint.

EXTRA FEATURE INCLUDED:

- Solid Hoarding - Purposefully designed mesh deters unauthorised access to the ramp's underside, making it a popular choice for schools and other public buildings.
- Corduroy Strips – This feature serves as a tactile warning for individuals with visual impairments, indicating the presence of a step approach.
- Access Hatch - A hatch opens allowing a person access to the underground services.





THE EXPERTS IN MODULAR RAMPS

TEL: **01424 714646**

EMAIL: SALES@RAPIDRAMP.CO.UK

HOURS:

Open 8am - 5pm, Monday to Friday

ADDRESS:

10 Menzies Road, Ponswood Industrial Estate, St Leonards on Sea, East Sussex TN38 9BB

Do you require modular ramps and steps?

Contact our sales team