



Ventura Park, Temporary Film Offices

PROJECT BACKGROUND & REQUIREMENT:

Two temporary, fully compliant steel steps were required at the south offices to provide access from the fire exit and entrance for a three-year hire period.

Our steel modular steps were chosen for their superior safety and fire-resistant properties. Unlike wooden steps, which are combustible and prone to igniting when exposed to flames or high temperatures, our products provided a reliable and safer solution for a project requiring secure access and safe evacuation in the event of an emergency.

APPLICATION

Public Building

LOCATION

St Albans, Hertfordshire

SYSTEM

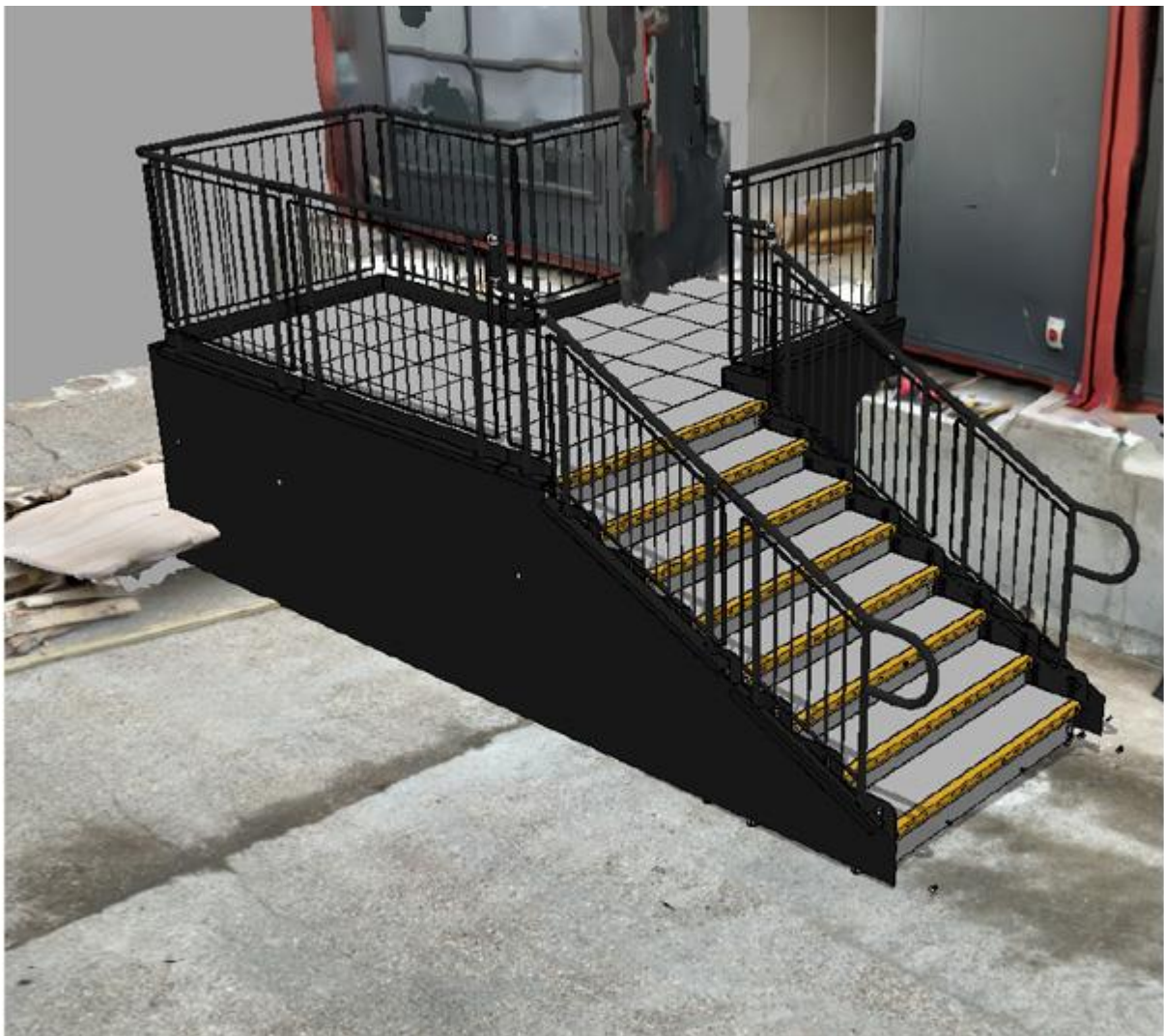
Temporary Modular Steps

SERVICE PACKAGE

Hire

DESIGN PHASE:

We conducted a RapidScan of the area, capturing all visible features, including the building and all variations in ground levels. Our design team then overlaid a 3D visual of the step units onto the RapidScan model, designing around any obstacles.



INSTALLATION:

The step units were installed within 48 hours, meeting the project deadline without any delays. Additionally, they were ready for immediate use once completed.

When the office lease concludes, the step units will be removed, typically within 24 hours, returning the site to its original condition. The components will be stored in our warehouse, ready for reuse in the client's other rental projects.

In contrast, concrete or timber steps are permanent solutions that are not suitable for temporary use. Once removed, they are often discarded, making them less environmentally friendly and cost-effective.

FEATURES INCLUDED:

- Looped Trombone Ends – Prevents clothes from snagging at the ends.
- Slip-Resistant Mesh Platform - A multi-directional walkway with self-draining steel mesh and a galvanised finish.
- Standard Colour: Black - Powder-coated black finish for greater durability than traditional paint.
- Adjustable Telescopic Legs - Adaptable to various threshold heights.
- Anti-climbing Infill Handrail - Prevents users from climbing or falling through gaps.
- Slip-Resistant Yellow Tread - Enhances safety by making step edges and level changes more visible to those with impaired vision.
- Solid Hoarding - Purposefully designed mesh deters unauthorised access to the step unit's underside, making it a popular choice for public buildings such as schools.



Do you require modular ramps and steps?

Request a quick price

EMAIL: sales@rapidramp.co.uk
VISIT: rapidramp.co.uk

HOURS: Open 8am - 5pm, Monday to Friday
ADDRESS: Riverside Works, Church Ln, Etchingam, TN19 7AS